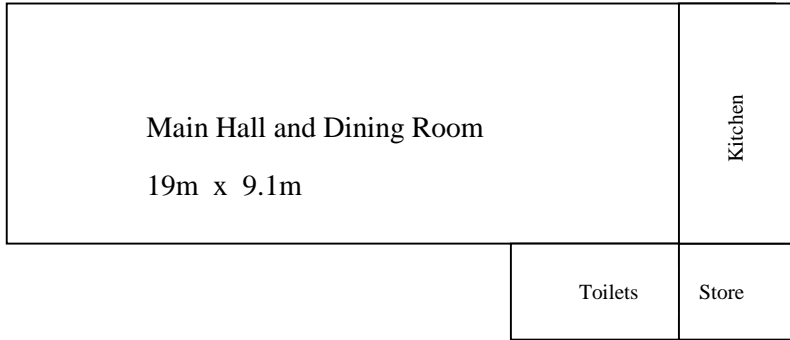
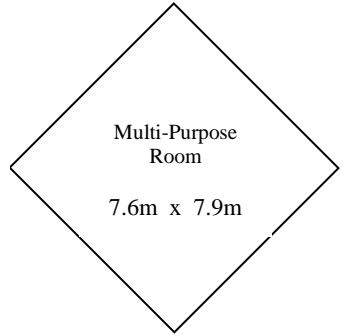
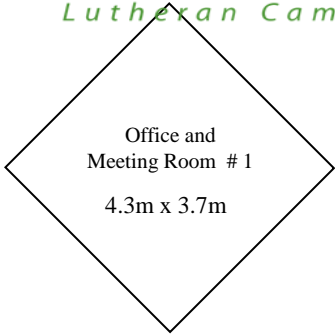


Not to Scale.
Room numbers are in **bold**

**PLEASE NOTE: You are entitled to average
1 room for every 5 persons on camp.
(If you require additional rooms a fee may apply)
Total Camp Beds 150**

ENSUITED

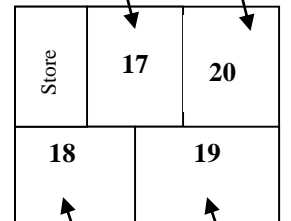
No - Ensuite



Rooms 17-20 use the shower block facilities. (Not Ensuite)

3 Bunks Total = 6 2 Bunks Total = 4

Max. 20



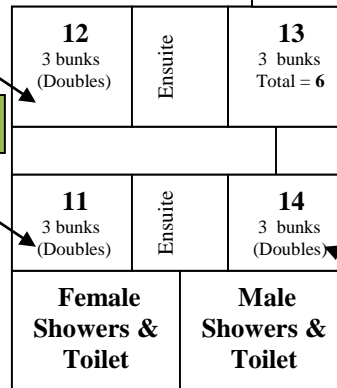
Ensuite	1 4 Bunks (Doubles) Total = 8
Ensuite	2 4 Bunks (Doubles) Total = 8
Ensuite	3 4 Bunks (Doubles) Total = 8
Ensuite	4 4 Bunks (Doubles) Total = 8
Ensuite	5 4 bunks (Doubles) Total = 8
Ensuite	6 4 bunks (Doubles) Total = 8
Ensuite	7 4 bunks (Doubles) Total = 8
Ensuite	8 4 bunks (Doubles) Total = 8

Max. 64

Total = 6

Max. 24

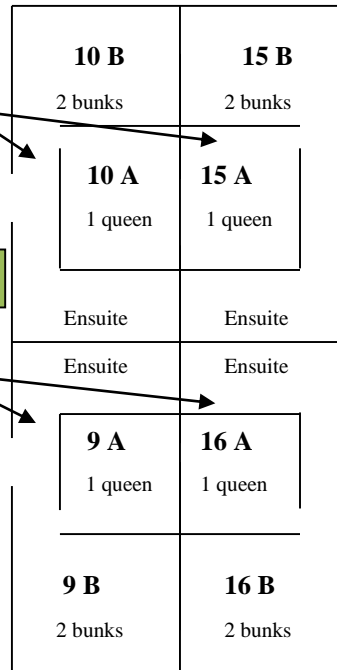
Total = 6



Total = 6 (Each Dorm)

Max. 24

Total = 6 (Each Dorm)



Max. 18

Dorm's 21 - 24

Each Bedroom with an ensuite.

Living Area & Kitchenette Inc. (TV + Air Cond)

30 Meters from Room 16

NOTE:
Room 8 is suitable for people with disabilities



Dormitories 21 – 24

Please check with the Camp Manager regarding conditions of hire for this facility.

Max. 18
Persons

